

# CX85D SR

## STAGE V



## CX D-SERIES HYDRAULIC EXCAVATORS SPEC SHEET

### ENGINE

Model \_\_\_\_\_ YANMAR 4TNV98CT-L2WSH  
Emission level \_\_\_\_\_ REG. EU 2016/1628 STAGE V  
Type \_\_\_\_\_ Water-cooled, 4-cycle diesel, 4-cylinder in line,  
High pressure common rail system (electric control), Turbocharger, ATS  
Displacement \_\_\_\_\_ 3.318 l  
Bore x stroke \_\_\_\_\_ 98 mm x 110 mm  
**Rated net power**  
ISO 9249 \_\_\_\_\_ 50.7 kW at 2000 min<sup>-1</sup>  
**Maximum torque**  
ISO 9249 \_\_\_\_\_ 283 N-m at 1300 min<sup>-1</sup>

### HYDRAULIC SYSTEM

Main pumps \_\_\_\_\_ 2 variable displacement axial piston pumps with  
regulating system  
Max. oil flow \_\_\_\_\_ 2 x 74 liter/min at 2000 min<sup>-1</sup>  
**Circuit working pressure**  
Boom/Arm/Bucket \_\_\_\_\_ 29.4 MPa  
Offset \_\_\_\_\_ 29.4 MPa  
Swing \_\_\_\_\_ 24.0 MPa  
Travel \_\_\_\_\_ 29.4 MPa  
**Pilot pump (1 gear pump)**  
Max. oil flow \_\_\_\_\_ 18 l/min at 2000 min<sup>-1</sup>  
Circuit working pressure \_\_\_\_\_ 3.9 MPa  
**Blade pump (1 gear pump)**  
Max. oil flow \_\_\_\_\_ 35.4 l/min at 2000 min<sup>-1</sup>  
Circuit working pressure \_\_\_\_\_ 23.5 MPa

### SWING

Swing Motor \_\_\_\_\_ Fixed displacement axial piston motor  
Maximum swing speed \_\_\_\_\_ 10.4 min<sup>-1</sup>  
Swing torque \_\_\_\_\_ 17,000 Nm

### FILTERS

Suction filter \_\_\_\_\_ 105 µm  
Return filter \_\_\_\_\_ 6 µm  
Pilot line filter \_\_\_\_\_ 8 µm

### ELECTRICAL SYSTEM

Voltage \_\_\_\_\_ 24 V  
Alternator \_\_\_\_\_ 60 Amp  
Starter \_\_\_\_\_ 24 V 3.2 kW  
Battery \_\_\_\_\_ 2X12V 64 Ah/5 HR

### UNDERCARRIAGE

Travel motor \_\_\_\_\_ Variable displacement axial piston motor  
Low travel speed \_\_\_\_\_ 3.2 km/h  
High travel speed \_\_\_\_\_ 5.1 km/h  
Drawbar pull \_\_\_\_\_ 59.3 KN  
Number of carrier rollers (each side) \_\_\_\_\_ 1  
Number of track rollers (each side) \_\_\_\_\_ 5  
Number of shoes (each side) \_\_\_\_\_ 39  
Type of shoes \_\_\_\_\_ Triple grouser shoes  
Grade ability \_\_\_\_\_ 70 % (35°)

### SOUND LEVEL

External guaranteed sound power level  
(EU Directive 2000/14/EC) \_\_\_\_\_ LwA 98 dB(A)  
Operator cab sound pressure level (ISO 6396) \_\_\_\_\_ LpA 69 dB(A)

### CIRCUIT AND COMPONENT CAPACITIES

Fuel tank \_\_\_\_\_ 120 l  
Hydraulic system \_\_\_\_\_ 96.3 l  
Hydraulic tank \_\_\_\_\_ 51 l  
Cooling system \_\_\_\_\_ 12.2 l

### WEIGHT AND GROUND PRESSURE

#### CX85D SR OFFSET BOOM

with 1.75 m Arm, 0.32 m<sup>3</sup> General Purpose Bucket, 450 mm grouser shoe, FOPS Level II guard, operator, lubricant, coolant and full fuel tank

Operating mass	Ground pressure
8,490 kg	0.038 MPa

#### CX85D SR MONOBOOM

with 1.69 m Arm, 0.32 m<sup>3</sup> General Purpose Bucket, 450 mm grouser shoe, operator, lubricant, coolant and full fuel tank

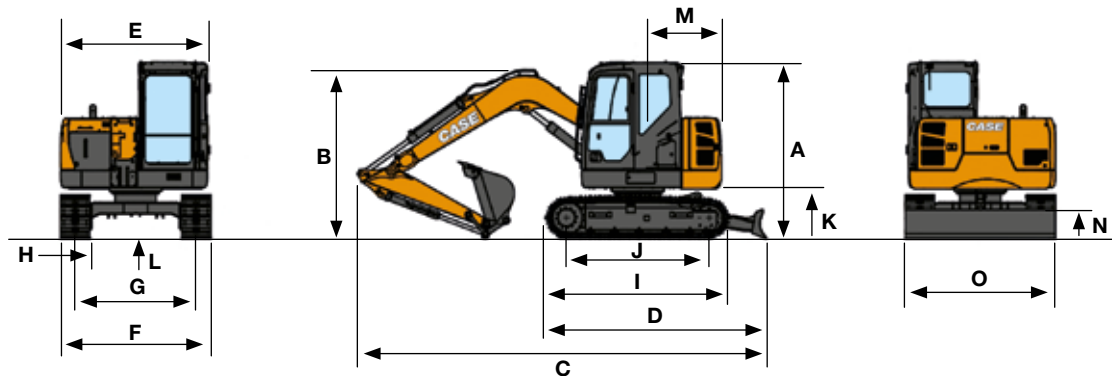
Operating mass	Ground pressure
7,930 kg	0.036 MPa

Counterweight 930 kg

# CX D-SERIES

## CX85D SR

### GENERAL DIMENSIONS

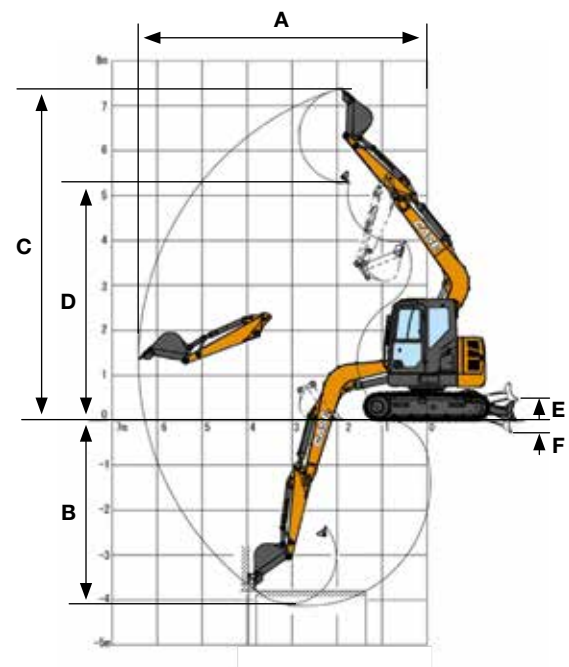


		MONOBOOM Arm 1.69 m	MONOBOOM Arm 2.19 m	OFFSET BOOM Arm 1.75 m	OFFSET BOOM Arm 2.10 m	
A	Cab height	mm	2720	2720	2860	2860
B	Overall height (with attachment)	mm	2720	2860	2860	2860
C	Overall length (with attachment)	mm	6310	6340	6310	6310
D	Overall length (without attachment)	mm	3410	3410	3410	3410
E	Upper structure overall width	mm	2270	2270	2270	2270
F	Undercarriage overall width	mm	2320	2320	2320	2320
G	Track gauge	mm	1870	1870	1870	1870
H	Width of standard shoe	mm	450	450	450	450
I	Crawler overall length	mm	2845	2845	2845	2845
J	Wheel base (Center to center of wheels)	mm	2210	2210	2210	2210
K	Clearance height under upper structure	mm	750	750	750	750
L	Minimum ground clearance	mm	360	360	360	360
M	Swing (rear end) radius	mm	1290	1290	1290	1290
N	Blade height	mm	450	450	450	450
O	Blade width	mm	2320	2320	2320	2320

### DIGGING PERFORMANCE

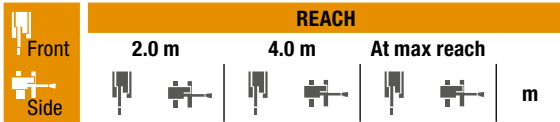
		MONOBOOM Arm 1.69 m	MONOBOOM Arm 2.19 m	
Arm digging force	kN	39.5	33.8	
Bucket digging force	kN	56.9	56.9	
A	Maximum reach	mm	6410	6890
B	Max. digging depth	mm	4130	4630
C	Max. digging height	mm	7370	7770
D	Max. dumping height	mm	5280	5670
E	Max dozer blade lift above ground	mm	440	440
F	Max dozer drop below ground	mm	280	280

		OFFSET BOOM Arm 1.75 m	OFFSET BOOM Arm 2.10 m	
Arm digging force	kN	39.4	34.7	
Bucket digging force	kN	56.9	56.9	
A	Maximum reach	mm	6500	6790
B	Max. digging depth	mm	4250	4590
C	Max. digging height	mm	7380	7590
D	Max. dumping height	mm	5310	5540
E	Max dozer blade lift above ground	mm	440	440
F	Max dozer drop below ground	mm	280	280
	Boom offset (L.H.)	mm	1100	1100
	Boom offset (R.H.)	mm	1000	1000



# LIFTING CAPACITY

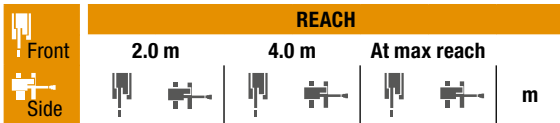
## CX85D SR OFFSET BOOM



### STD ARM / BLADE DOWN

1.75 m length, 450 mm shoes. Max reach 5.45 m

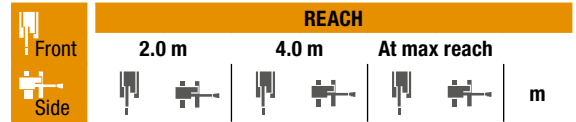
6.0 m					2250*	2250*	2.72
4.0 m	2590*	2590*	1930*	1930*	1850*	1470	4.73
2.0 m			2310*	1770	1820*	1090	5.4
0 m	2180*	2180*	2540*	1560	1860*	1050	5.28
-2.0 m	3550*	3550*	2040*	1550	1830*	1410	4.29



### LONG ARM / BLADE DOWN

2.10 m length, 450 mm shoes. Max reach 5.74 m

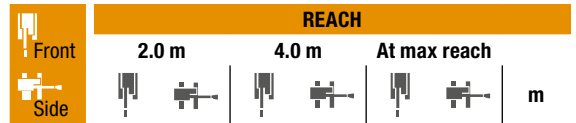
6.0 m					1910*	1910*	3.28
4.0 m			1780*	1780*	1680*	1310	5.07
2.0 m	3520*	3520*	2190*	1790	1680*	1000	5.7
0 m	2420*	2420*	2500*	1550	1730*	950	5.58
-2.0 m	3940*	3940*	2180*	1500	1760*	1220	4.66



### STD ARM / BLADE UP

1.75 m length, 450 mm shoes. Max reach 5.45 m

6.0 m					2250*	2250*	2.72
4.0 m	2590*	2590*	1930*	1910	1540	1410	4.73
2.0 m			1870	1690	1150	1040	5.4
0 m	2180*	2180*	1660	1480	1110	1000	5.28
-2.0 m	3550*	3550*	1640	1470	1500	1340	4.29



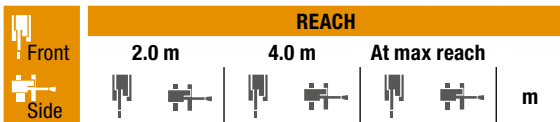
### LONG ARM / BLADE UP

2.10 m length, 450 mm shoes. Max reach 5.74 m

6.0 m					1910*	1910*	3.28
4.0 m			1780*	1780*	1380	1260	5.07
2.0 m	3520*	3520*	1900	1710	1050	950	5.7
0 m	2420*	2420*	1650	1470	1010	910	5.58
-2.0 m	3940*	3940*	1600	1420	1290	1160	4.66

# LIFTING CAPACITY

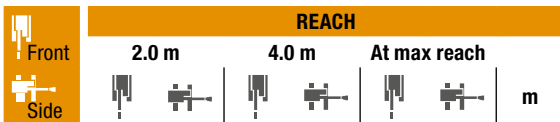
## CX85D SR MONOBOOM



### STD ARM / BLADE DOWN

1.69 m length, 450 mm shoes. Max reach 5.36 m

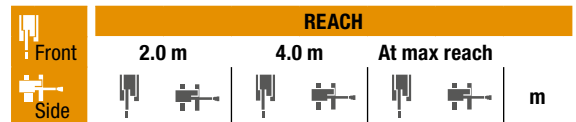
6.0 m					2380*	2380*	2.55
4.0 m			2120*	2030	1780*	1580	4.64
2.0 m			2540*	1900	1800*	1230	5.32
0 m			2810*	1770	2080*	1230	5.19
-2.0 m	3980*	3980*	2180*	1770	2000	1670	4.18



### LONG ARM / BLADE DOWN

2.19 m length, 450 mm shoes. Max reach 5.84 m

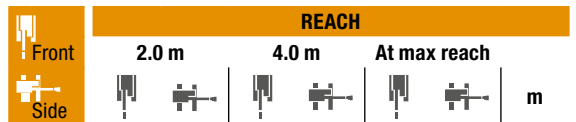
6.0 m					1780*	1780*	3.45
4.0 m			1870*	1870*	1440*	1340	5.18
2.0 m			2350*	1930	1440*	1090	5.8
0 m			2770*	1770	1680*	1080	5.68
-2.0 m	4620*	4620*	2460*	1730	1880*	1360	4.78



### STD ARM / BLADE UP

1.69 m length, 450 mm shoes. Max reach 5.36 m

6.0 m					2380*	2380*	2.55
4.0 m			2120*	1950	1660	1520	4.64
2.0 m			2000	1820	1290	1180	5.32
0 m			1870	1700	1290	1180	5.19
-2.0 m	3980*	3980*	1860	1690	1760	1600	4.18



### LONG ARM / BLADE UP

2.19 m length, 450 mm shoes. Max reach 5.84 m

6.0 m					1780*	1780*	3.45
4.0 m			1870*	1870*	1400	1290	5.18
2.0 m			2030	1850	1130	1040	5.8
0 m			1870	1700	1130	1030	5.68
-2.0 m	4620*	4620*	1830	1660	1430	1310	4.78

\* The above loads (kg) are compliant to the ISO standards and refer to the excavator equipped without bucket. The indicated loads are no more than 87% of hydraulic system lift capacity or 75% of static tipping load. Values marked with an asterisk (\*) are limited by the hydraulic lifting capacity.

www.casece.com

**EXPERTS FOR THE REAL WORLD**  
**SINCE 1842**

**CASE**  
CONSTRUCTION



Form No. 20188GB - MediaCross Firenze - 03/19

**CNH INDUSTRIAL  
DEUTSCHLAND GMBH**  
Case Baumaschinen  
Benzstr. 1-3 - D-74076 Heilbronn  
DEUTSCHLAND

**CNH INDUSTRIAL FRANCE, S.A.**  
16-18 Rue des Rochettes  
91150 Morigny-Champigny  
FRANCE

**CNH INDUSTRIAL - UK**  
First Floor, Barclay Court 2,  
Heavens Walk,  
Doncaster - DN4 5HZ  
UNITED KINGDOM

**CNH INDUSTRIAL - SOUTH AFRICA**  
Waterfall Business Park  
Bekker Street, Howick Close  
1685 Midrand - Johannesburg  
REPUBLIC OF SOUTH AFRICA

**CNH INDUSTRIAL  
MAQUINARIA SPAIN, S.A.**  
Avenida Aragón 402  
28022 Madrid  
ESPAÑA

**CNH INDUSTRIAL ITALIA SPA**  
Strada di Settimo, 323  
10099 San Mauro Torinese (TO)  
ITALIA

**CASE CUSTOMER CENTRE  
PARIS**  
RN 330 - Penchard  
77122 - Monthyon  
FRANCE

**CNH INDUSTRIAL - MIDDLE EAST**  
DAFZA - Dubai Airport Free Zone  
West Wing 4 B, Office 642  
P.O. Box 54588, Dubai,  
UNITED ARAB EMIRATES

**NOTE:** Standard and optional fittings can vary according to the demands and specific regulations of each country. The illustrations may include optional rather than standard fittings - consult your Case dealer. Furthermore, CNH Industrial reserves the right to modify machine specifications without incurring any obligation relating to such changes.

Conforms to directive 2006/42/EC

**CASE**  
**00800-2273-7373**

The call is free from a land line.  
Check in advance with your Mobile Operator if you will be charged. Toll free number not available from all calling areas.

